

BETWEEN
LOVE & **DEATH**

Damien Hirst and Tracey Emin





4
50
Damien Hirst

INTRODUCTION

Between Love and Death

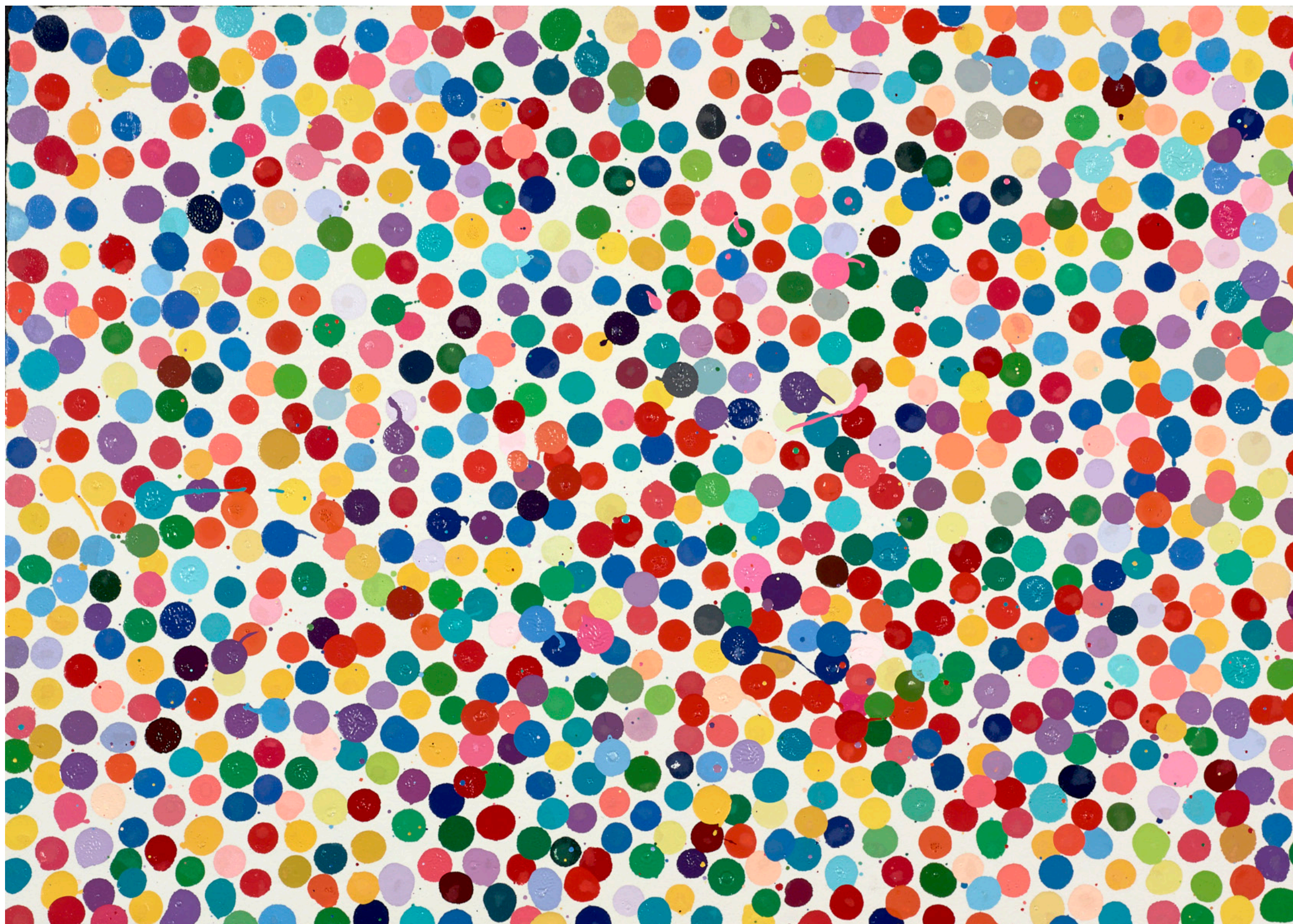
We are proud to present 'Between Love and Death', an extraordinary exhibition that delves into the enigmatic worlds of Tracey Emin and Damien Hirst, two renowned contemporary artists and prominent figures within the Young British Artists (YBA) movement.

Emin's vibrant and deeply personal works lay bare her tumultuous journey through life. Her raw and unfiltered artworks invite viewers into her emotional realm, filled with moments of vulnerability, love, and self-reflection. Meanwhile, Hirst unveils his unrelenting fascination with mortality, shedding light on the fragility and impermanence of human existence with his artworks that force us to confront our notions of life and death.

The style, media, and aesthetics of Emin and Hirst's work are entirely distinct, but both create with fearless audacity, employing shock tactics, pushing boundaries, and challenging conventional norms. Together, Emin and Hirst provoke and provide a captivating dialogue on the human condition. This exhibition brings together a collection of their most iconic and thought-provoking works, revealing the intimate connection between their artistic visions: the shared exploration of profound human experiences.



DAMIEN HIRST



4101 Like Dreams, from The Currency, 2016

Enamel paint on handmade paper

Signed, titled, dated and numbered '4101. Like Dreams. 2016. Damien Hirst' in pencil verso, from the series of 10,000 unique variants

12" x 8" (29.8cm x 21cm)



Aurous Iodide, 2009

Screenprint with gold glitter

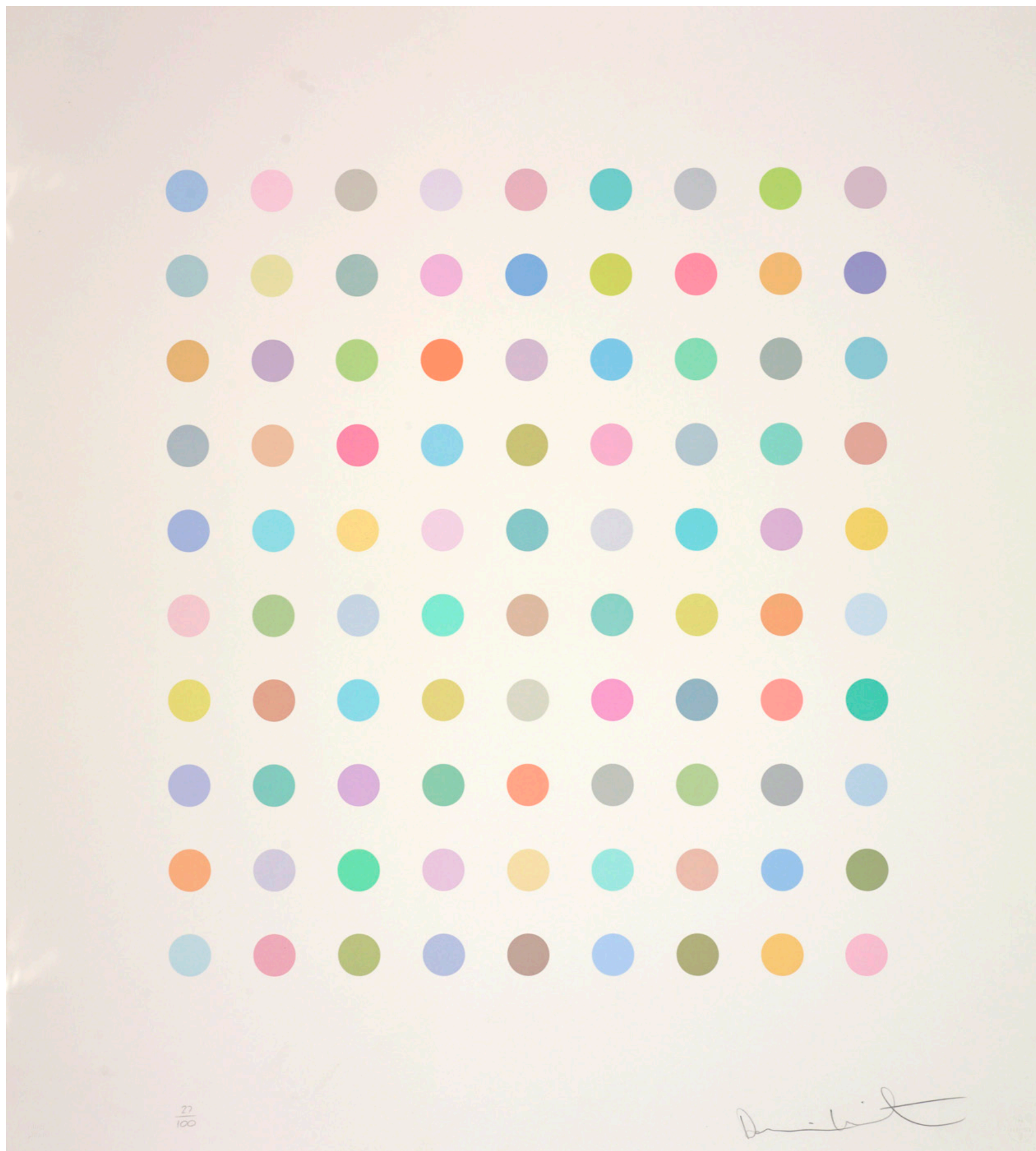
Signed, dedicated 'For Franco, Big it Up!' with a pencil drawing of a heart and xxx,
and numbered from the edition of 150

30" x 39" (75cm x 98cm)

Vipera Lebetin, 2011

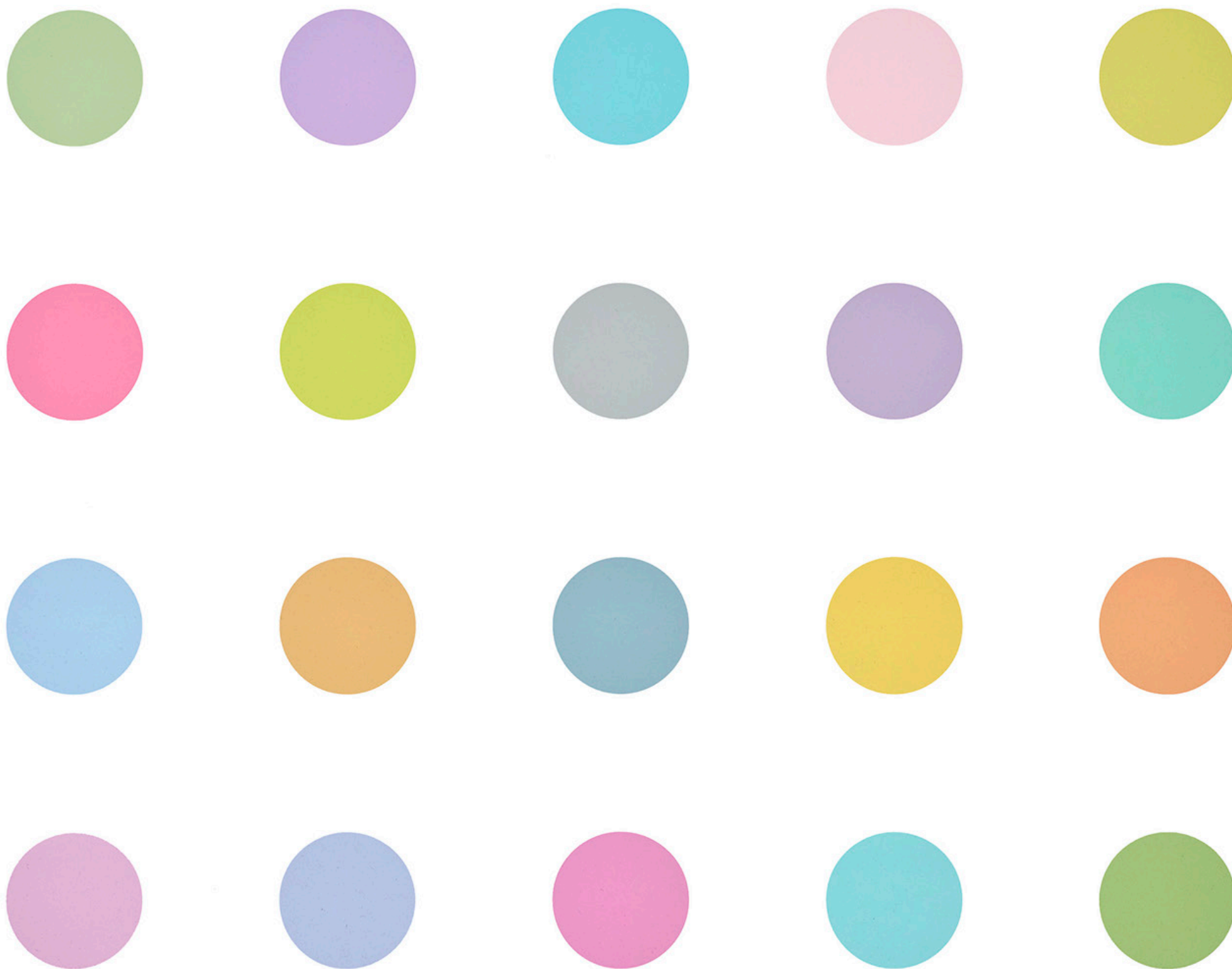
Screenprint in colours with glazes on Somerset Tub Sized paper
Signed and numbered from the edition of 100 (there were also
ten artist's proofs)

25" x 28" (63.5cm x 69.9cm)



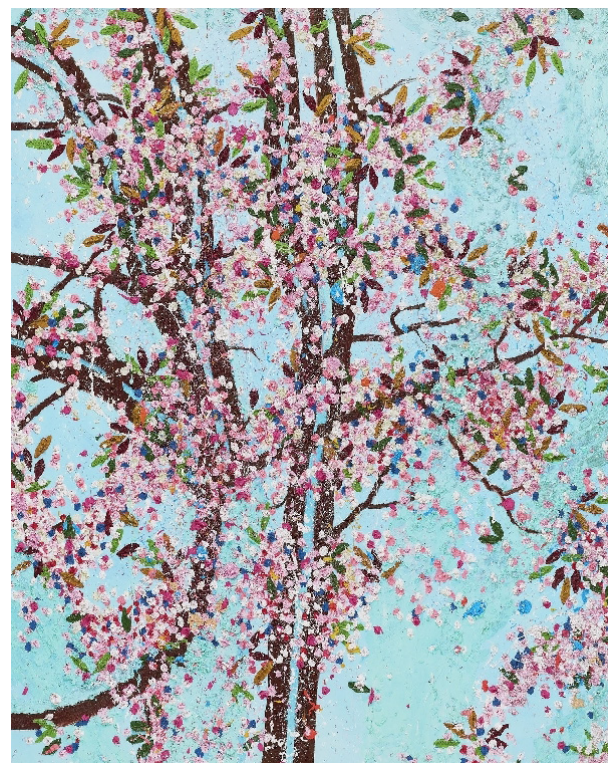
Lepidine, 2008
Screenprint in colours with metallic silver on wove paper
Signed and numbered from the edition of 150 in pencil
30" x 39" (76cm x 98cm)





D. Smith

Vespula Vidua, 2011
Screenprint in colours on wove paper
Signed and numbered from the edition of 100 in pencil
44" x 36" (91cm x 112cm)



The Virtues Suite, 2021

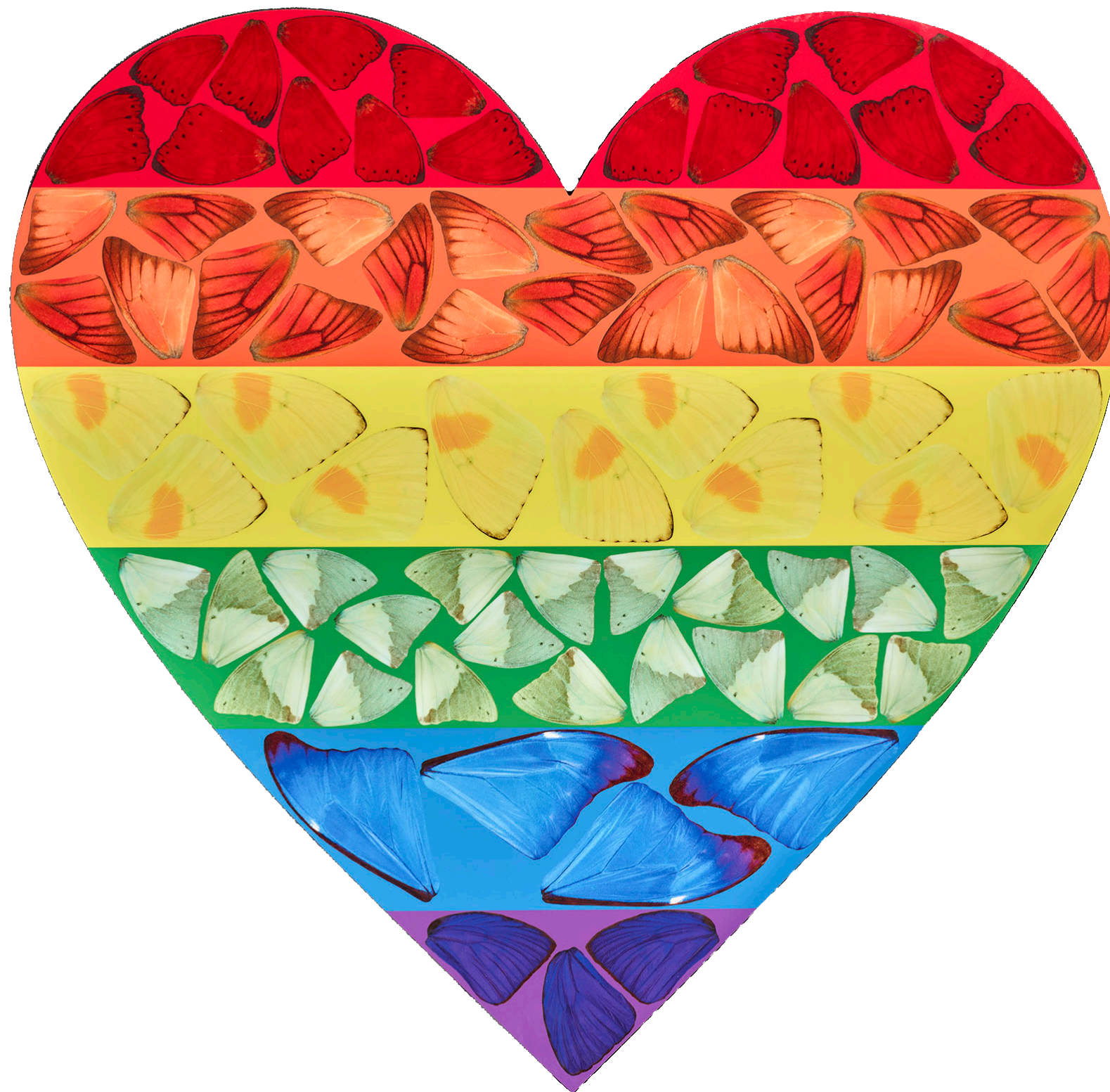
(H9-1 Justice; H9-2 Courage; H9-3 Mercy; H9-4 Politeness;

H9-5 Honesty; H9-6 Honour; H9-7 Loyalty; H9-8 Control)

Laminated Giclée print on aluminium composite panel

Signed and numbered on the label verso by the artist

Each: 38" x 47" (96cm x 120cm)



Butterfly Heart, 2020

Laminated Giclée print on aluminium composite panel

Signed by the artist verso with printed signature, from the edition of 3510

14" x 14" (35.5cm x 35.5cm)



The Empresses Suite, 2022

(H10-1 Wu Zetian; H10-2 Nūr Jahān; H10-3 Theodora; H10-4 Suiko; H10-5 Taytu Betul)

Laminated Giclée print in colours on aluminium composite panel, screen printed with glitter

Signed and numbered on the label on the reverse by the artist

Each: 39" x 39" (100cm x 100cm)



Earth H6-6 from The Elements, 2020

Giclée print on Acrylic Face-Mounted (Diasac)

Signed, titled, dated and numbered verso from the edition of 60
39" x 39" (100cm x 100cm)



Domine, Dominus Noster from Psalms, 2010
Screenprint in colours with glazes on wove paper
Signed and numbered from the edition of 25 in pencil
29" x 28" (74cm x 71.5cm)



Miracle, 2015
 Giclee print with UV glaze on paper
 Signed and numbered from the edition of 50
 15" x 18" (39cm x 46cm)



Beneficence, 2015
 Giclee print with UV glaze on paper
 Signed and numbered from the edition of 50
 15" x 18" (39cm x 46cm)

Untitled (Red Butterfly), 2005

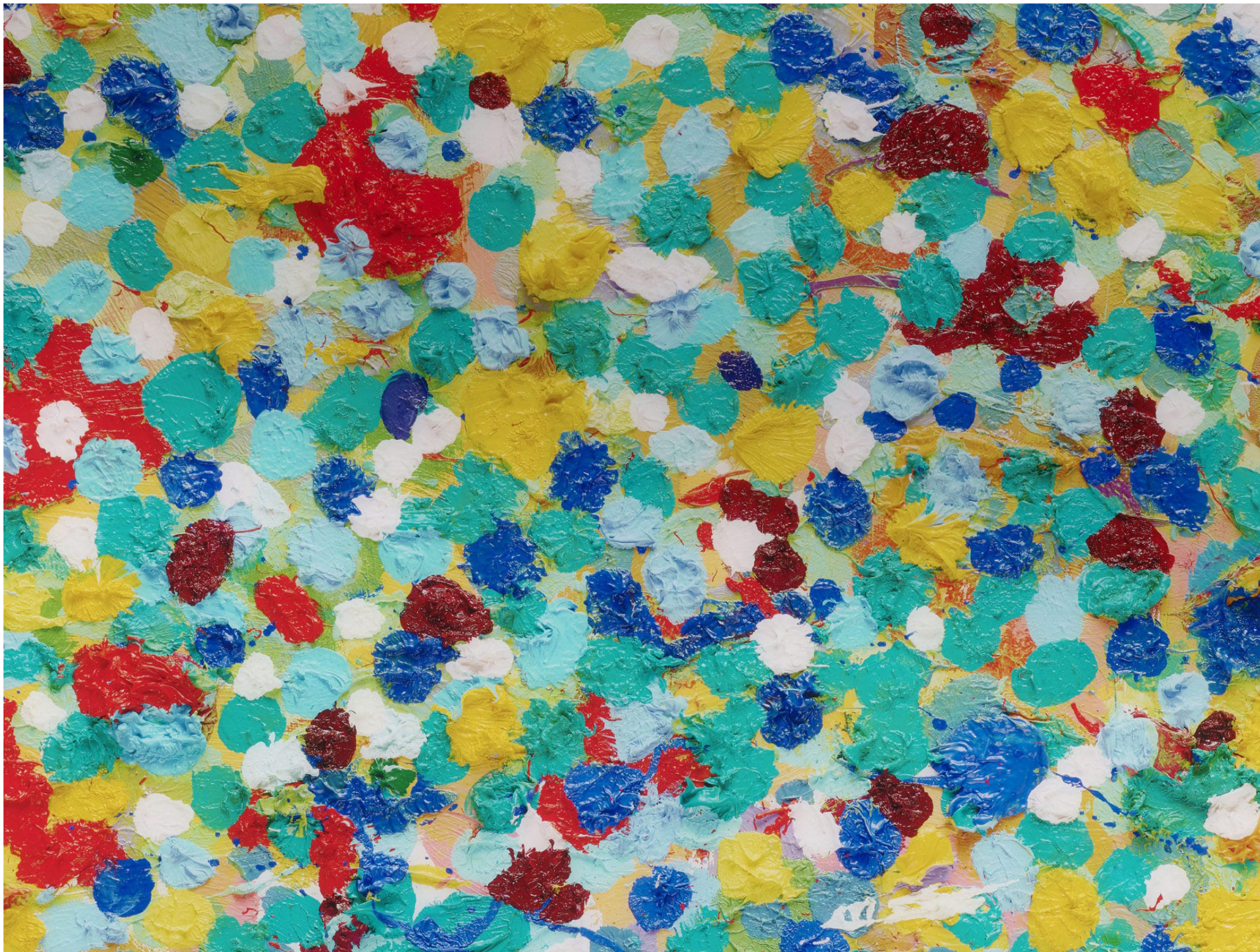
Screenprint and polymer gravure printed in colours on thick wove paper
Signed and inscribed in felt-tip pen 'For Lesley, Love Damien Hirst xxx',
numbered from the edition of 70 on a label verso

39" x 26" (100cm x 67cm)



The Souls III – Chocolate/Leaf Green/Silver Gloss, 2010
3 colour foil block on 300gsm Arches 88 archival paper
Signed in pencil lower right and numbered from the edition of 15 on a label verso
20" x 28" (50.8cm x 71cm)



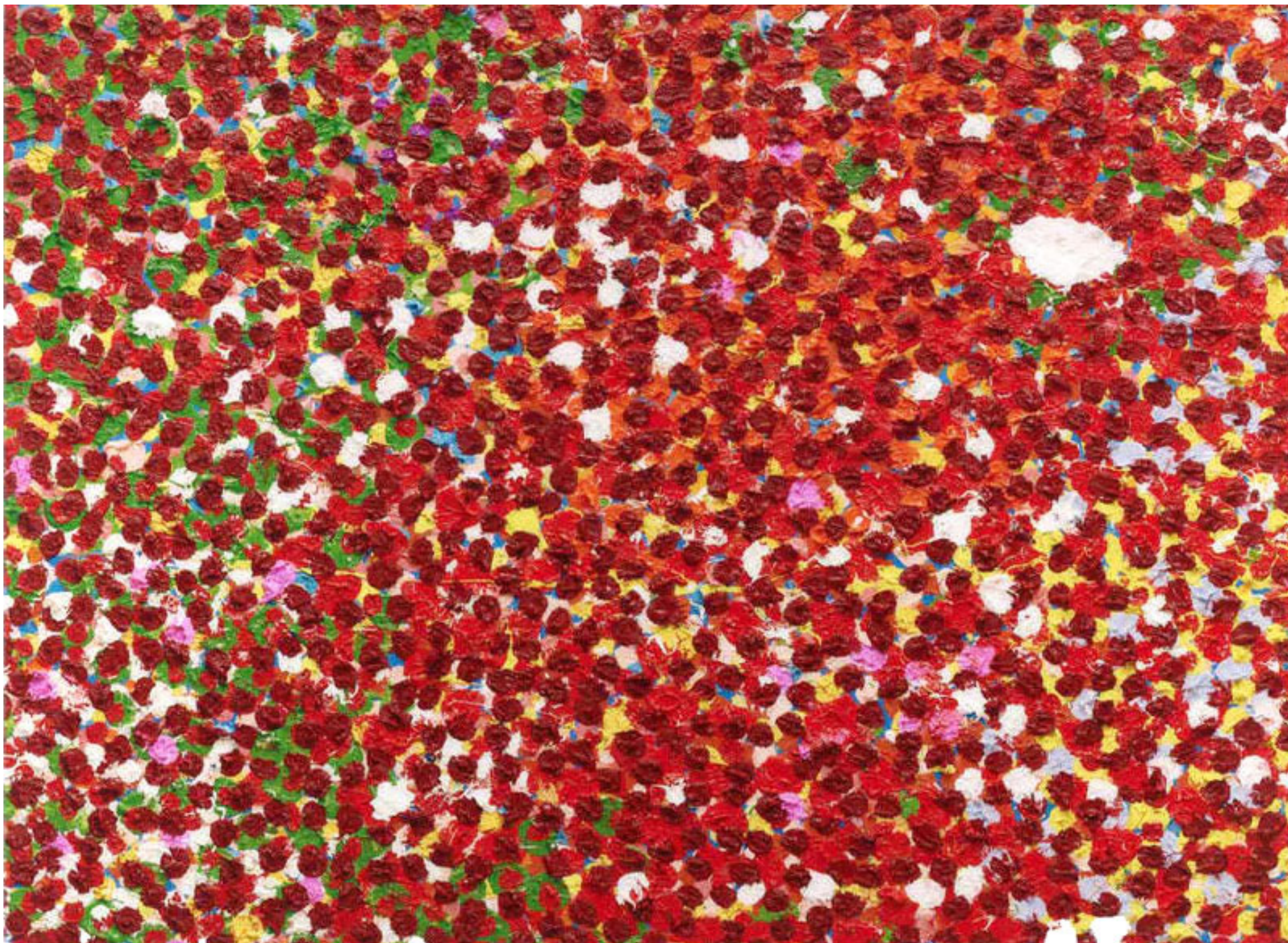


H4-6 Kew from Veils, 2020

Giclée with diasec mounted on aluminium panel

Signed by the artist and numbered from the edition of 75, verso

50" x 36" (126cm x 92cm)



Ryoanji (H4-7) from Veils, 2020

Diasec-mounted giclée print, on aluminium composite panel

Signed in pencil, numbered from the edition of 75 (there were also five artist's proofs)

50" x 36" (126cm x 92cm)

I Once Was What You Are, You Will Be What I Am (#1/6), 2007
Photogravure etching on Arches paper
Signed and numbered from the edition of 48 in pencil
37" x 34" (93cm x 85.5cm)

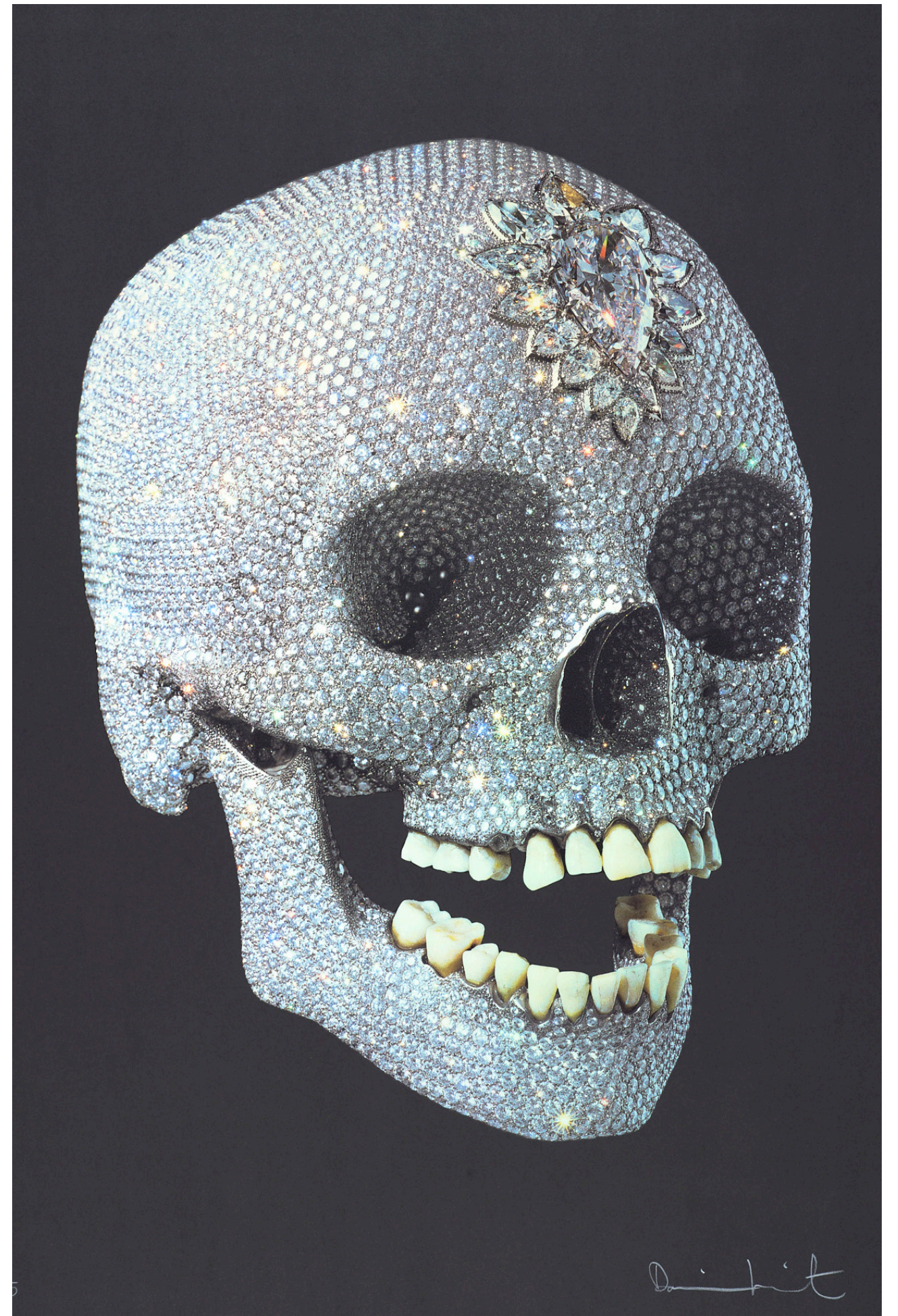


For The Love of God, Shine, 2007

Screenprint in colours with glaze and diamond dust on wove paper

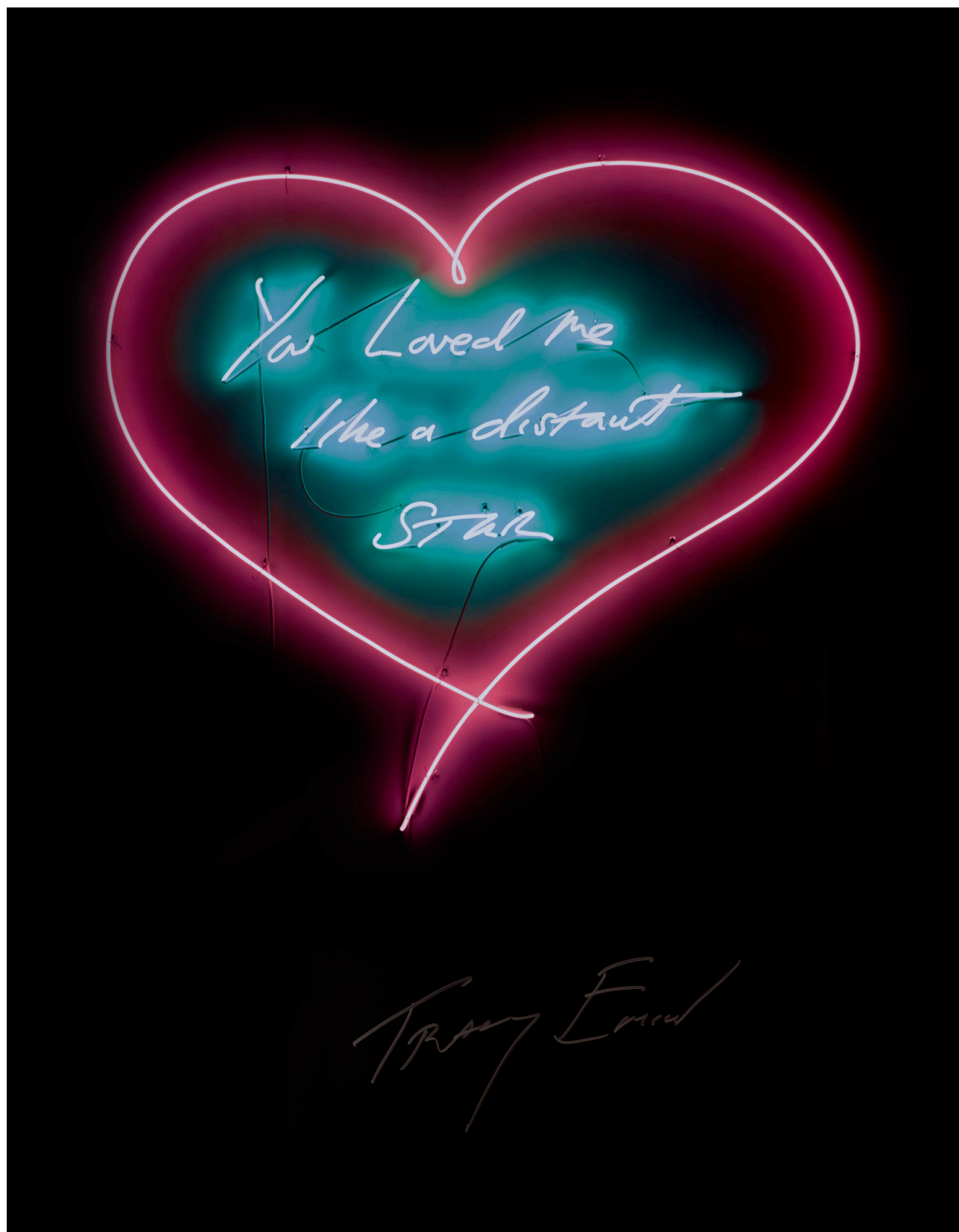
Signed and numbered from the edition of 250 in white crayon

39" x 29" (100cm x 75cm)



TRACEY EMIN



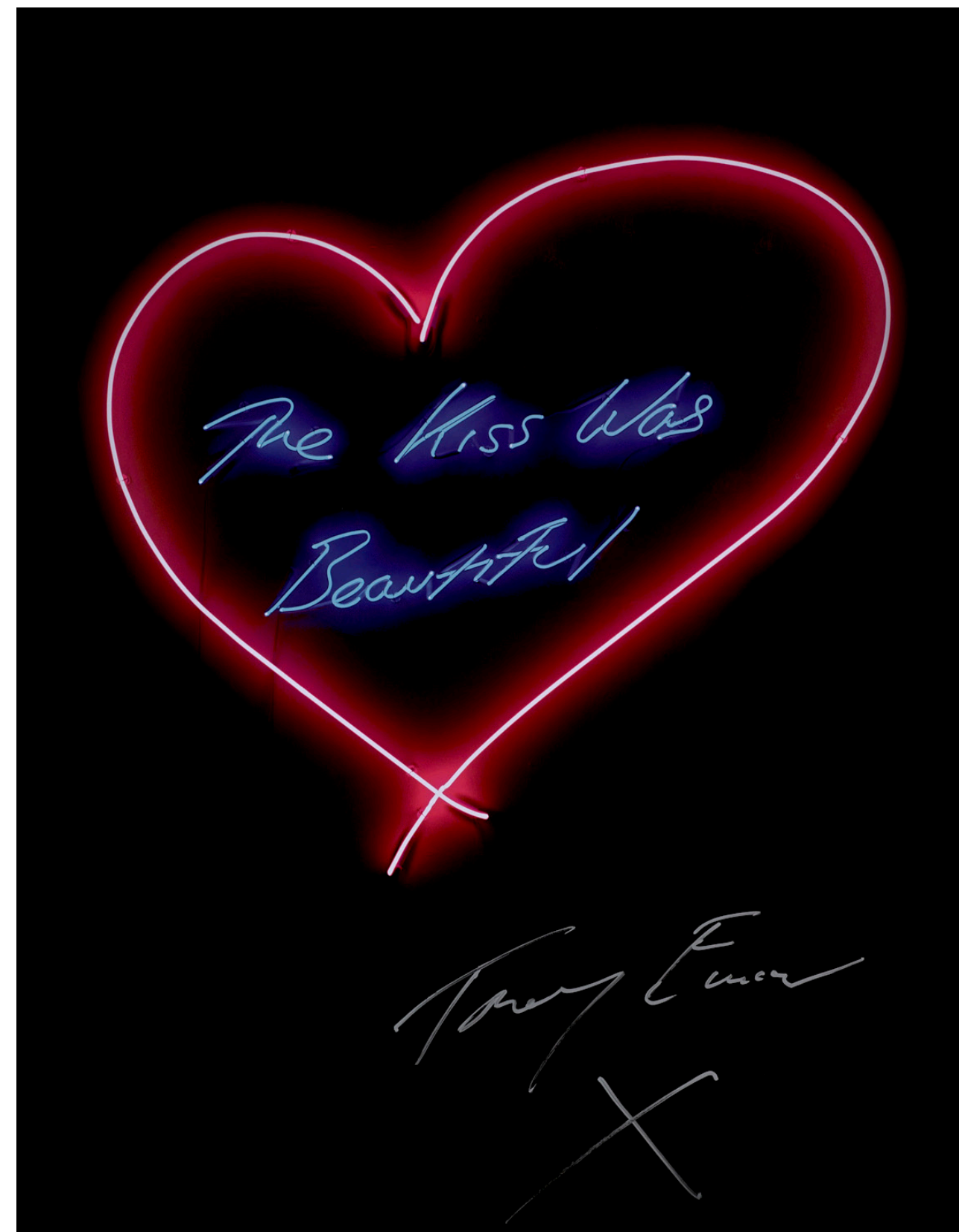


You Loved Me Like A Distant Star, 2016

Offset lithographic poster printed in colours on 250 gsm silk finish paper

Signed in silver felt-tip pen, from the edition of 500

20" x 28" (50cm x 70cm)



The Kiss Was Beautiful, 2016

Offset lithographic poster printed in colours on 250 gsm silk finish paper

Signed in silver felt-tip pen, from the edition of 500

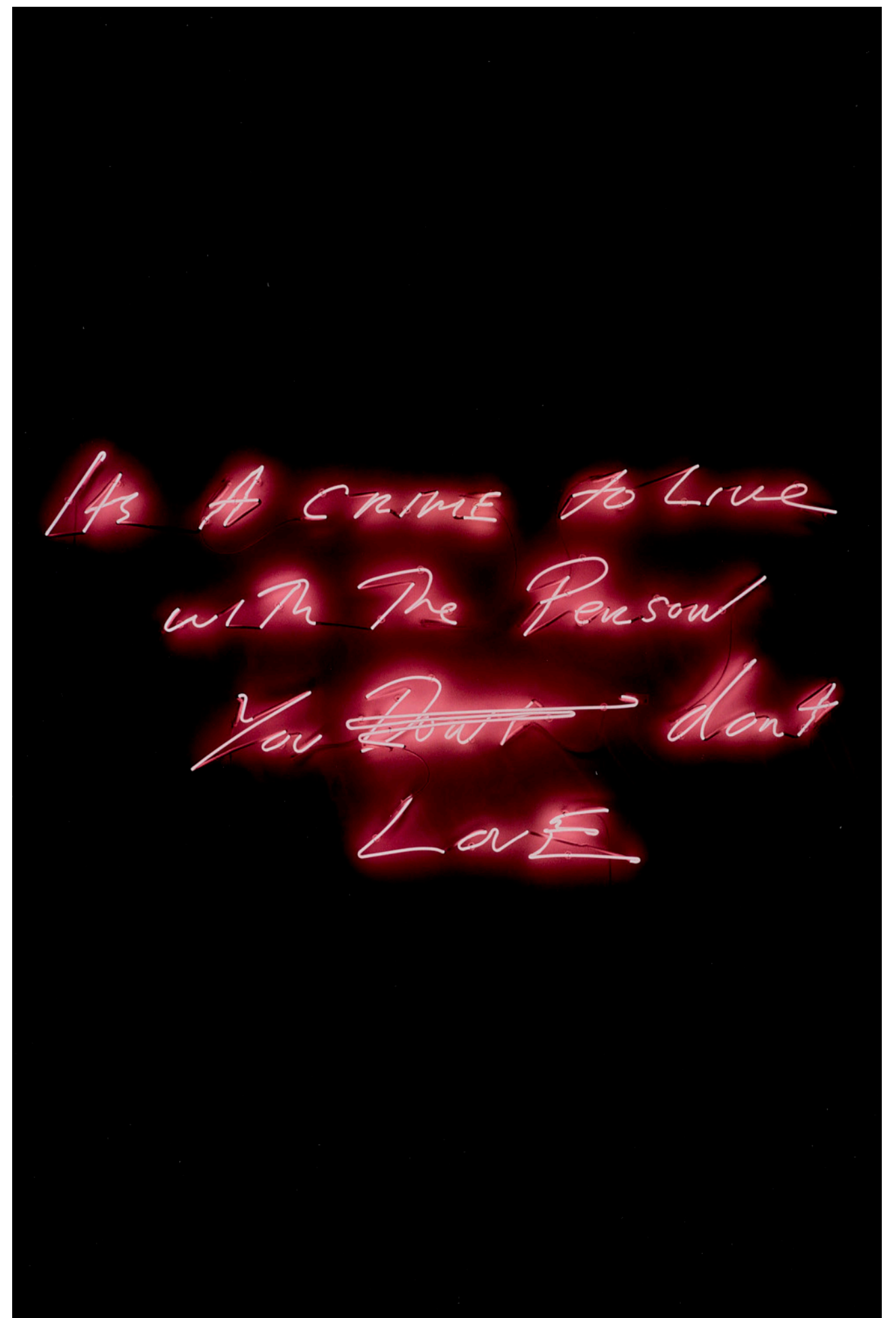
20" x 28" (50cm x 70cm)

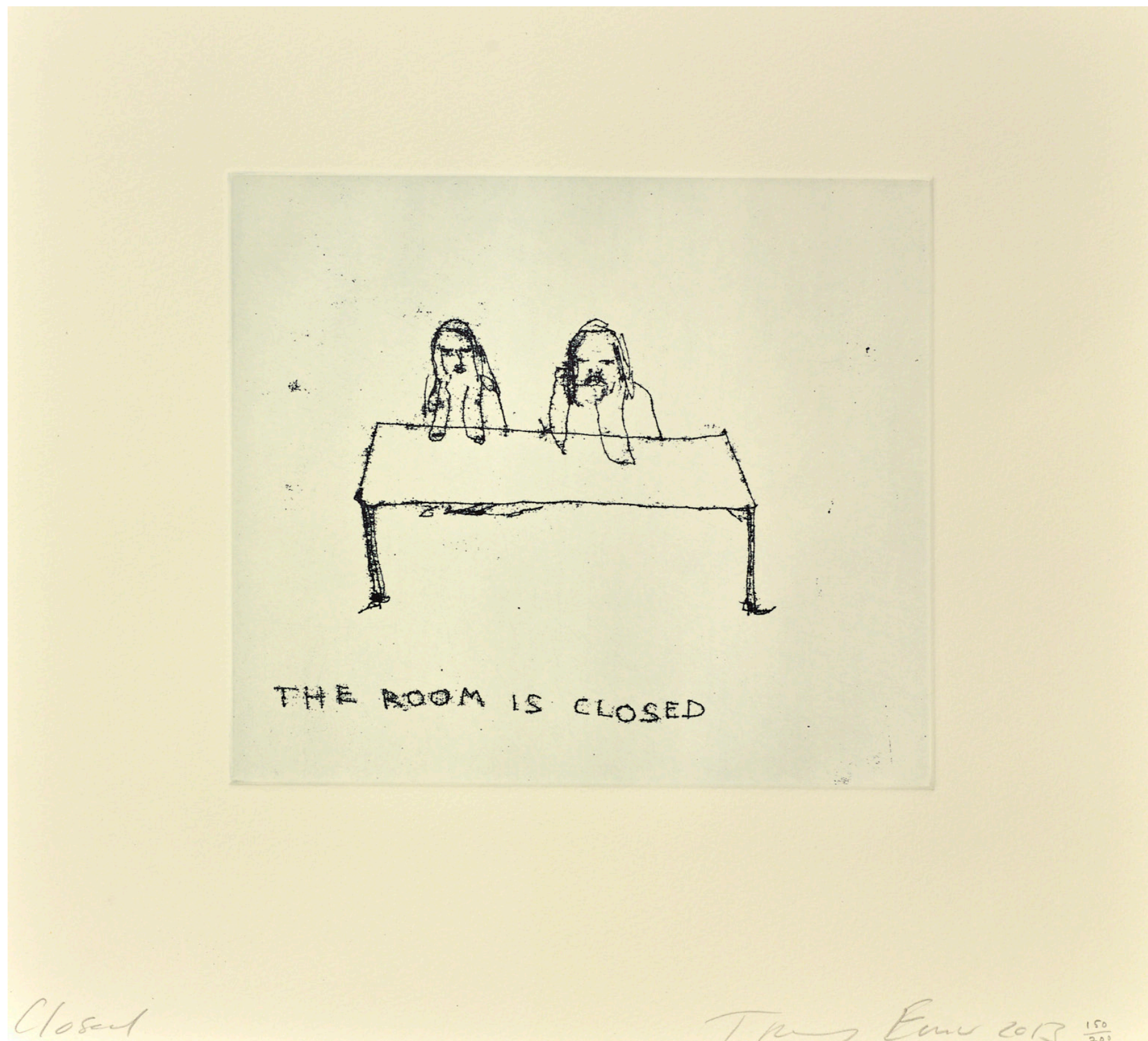
It's a Crime To Live With The Person You Don't Love, 2021

Giclée print on Hahemühle Fine Art Pearl 285gsm paper

Numbered from an edition of 100 to the accompanying Certificate of Authenticity

12" x 17" (29.5cm x 42cm)





The Room is Closed, 2013

Etching in colours on wove paper

Signed, dated and numbered from the edition of 200 by the artist in pencil

15" x 14" (38.5cm x 36.5cm)

You inspire me with
Your determination
And I Love You



Birds, 2012

Lithograph in colours on wove paper
Signed, titled, dated, and numbered from the edition
of 300 in pencil (there were also 30 artist's proofs)
24" x 30" (60cm x 76cm)

Birds 2012

Tracy Lind ¹¹⁸/₃₀₀ 2011



Small and Beautiful, 2012

Polymer gravure etching on 300gms Somerset soft white paper

Signed, titled, dated and numbered from the edition of 300 in pencil

12" x 13.5" (30.5cm x 33.5cm)



These Feelings Were True, 2020

Lithograph printed in colours on Somerset Velvet Warm White wove paper

Signed, dated and numbered from the edition of 50

25.5" x 22" (65cm x 55cm)



I Couldn't Tell Anyone I Loved You, 2020

One colour lithograph on Somerset Velvet Warm White 400gsm

Signed, dated and numbered from the edition of 50

22" x 26" (65.5cm x 55.5cm)



Four Thousand Years, 2020

One colour lithograph on Somerset Velvet Warm White 400gsm

Signed, dated and numbered from the edition of 50

22" x 26" (65.5cm x 55.5cm)

These Feelings Were True, Blue Madonna, 2020
Three colour lithograph on Somerset Velvet Warm White 400gsm
Signed, dated and numbered from the edition of 50
18" x 22" (46cm x 56cm)





No! This is Sad, 2022

2 colour lithographs on Somerset Velvet Warm White 400gsm
Signed, dated and numbered from the edition of 50 in pencil
37.5" x 29.5" (94cm x 74cm)



A Feeling of Shock, 2021

2 colour lithographs on Somerset Velvet Warm White 400gsm
Signed, dated and numbered from the edition of 50 in pencil
37" x 29" (94cm x 74cm)



On My Knees, 2021

4 colour lithograph on Somerset Velvet Warm White 400gsm paper

Signed, titled, dated and numbered from the edition of 100 in pencil

23.6" x 29.9" (60cm x 76cm)



I Was Left Sleeping, 2017

Lithograph printed in black on Somerset wove paper

Signed, titled, dated and numbered from the edition of 50 in pencil

21" x 24" (53.8cm x 62.5cm)

CLARENDON
FINE ART